

Patent Pending (IFS)\*

**KELYNIAM**

# Customized *Skull & Craniofacial* Implants

***Expediting Superior Outcomes***

*Revolutionary 24-Hour  
Turnaround Time*

*Precision Anatomic*

*\*Patent Pending Integrated Fixation System (IFS)*

*Kelyniam Global, Inc.*

## CHOOSE KELYNIAM AND DISCOVER...

the fastest turn-around in the industry

- *In as little as 24 hours, schedule surgery sooner*
- *Better outcomes, potentially avoiding complications*
- *Reduced operating time\**

a custom-crafted, absolute fit

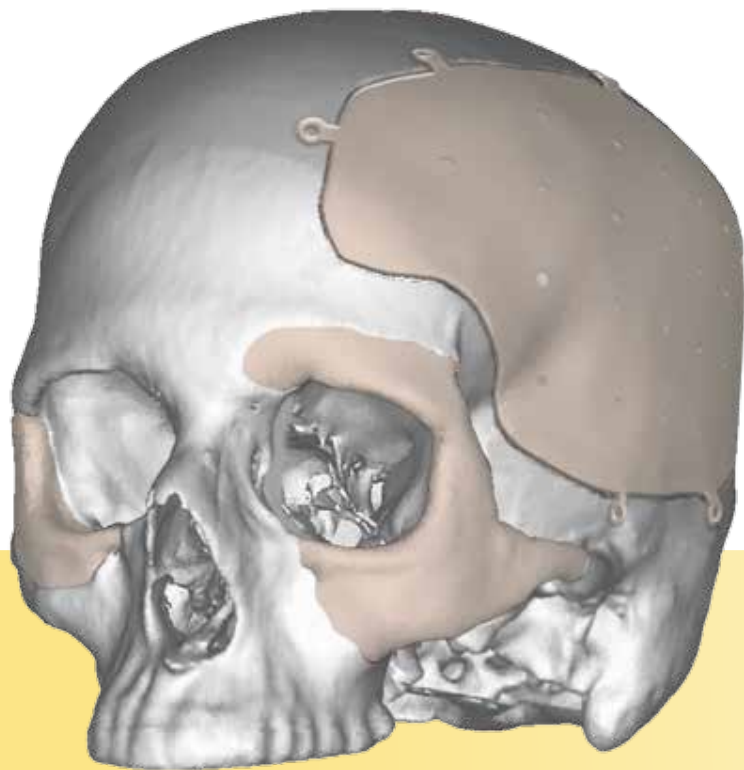
- *Drastically reduce manual sculpting during surgery*
- *Reduce overall operating time meaning quicker return to normalcy for the patient*
- *Patients can receive rehabilitative care sooner*

the true leader in the industry,  
pioneering innovation

- *We pioneered the use of PEEK-OPTIMA® for cranial applications, the standard in advanced bio-materials*
- *We now offer fully customized craniofacial solutions*
- *Recommended by top surgeons in the field*

winning features

- *Low profile tabs*
- *No more pre-plating*
- *Reduced fixation time*
- *Tab locations are easily customized*



Our precision  
now extends to  
craniofacial implants.

***KELYNIAM***  
EXPEDITING SUPERIOR OUTCOMES ►

# PEEK-OPTIMA<sup>®</sup> (POLYMER)



- Engineered for strength, stability and biocompatibility
- Radiolucent and Nonmagnetic (No CT or MRI artifacts) critical in postoperative diagnostic monitoring
- Lightweight with Bone-like stiffness and strength
- Use with any cranial or craniofacial fixation system
- Resistant to high heat - allowing sterilization by steam
- Modification can be performed in the O.R. with standard high-speed burr instruments

	Cortical Bone	PEEK-OPTIMA <sup>®</sup>
Modulus of Elasticity (stiffness) (GPa)	8 - 24	3.6 – 4.1
Yield Strength (MPa)	115	113

## THE BEST FIT 3D BIO-CAD/CAM +CNC

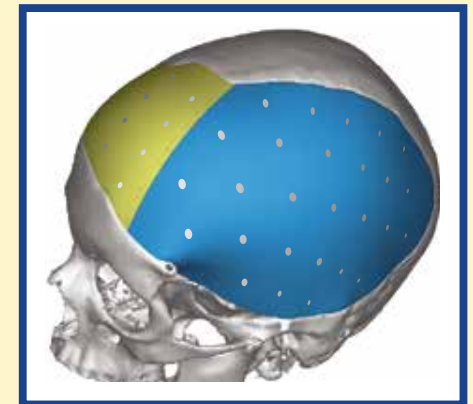
### THE DIFFERENCE IS IN THE DETAILS

Extensive cranial and craniofacial defects resulting from trauma or oncologic resection present reconstructive challenges. PEEK implants are customizable, bio-compatible and non-porous and thus an ideal material for these applications.

Derived from a patient's CT Scan Data, software is used to transfer the intricate details found on the edge of the defect to the implants' edge.

### SEE THE DIFFERENCE

- Better anatomic fit versus conventional reconstructive methods
- Noticeable preferred fit versus other competing implant options
- Reduced operating time compared to traditional reconstructive methods that require extensive contouring (titanium mesh/bone cement)
- Excellent aesthetic results for surgeon and patient



# THE BEST TURNAROUND K-PLANS<sup>SM</sup>

- Provides surgeon with additional treatment options
- Cases no longer need to be scheduled weeks/months in advance, reducing scar tissue and bone remodeling
- Decrease the time patients are required to wear a protective helmet – improving self-esteem and expediting recovery
- Reliable source for “Emergency” and “In-patient” situations



Our emergency plan provides precision replicated, patient specific cranial implants in as little as 24-hours!

- *Electronic Implant Verification Service*
- *Expedited Service: 24 hour turnaround*



Our leading plan provides the same high-quality implants as our ke24 plan, delivered in as little as 72 hours.

- *Electronic Implant Verification Service*
- *Standard Service: 3-5 Day turnaround*



If a physical implant model is needed to verify a complex defect, we still offer the fastest service to fulfill you and your patients needs without delays.

- *Physical Implant Verification Service*
- *5-7 Day turnaround*

## ORDER NOW

**CALL A KELYNIAM SALES REPRESENTATIVE:**  
1-800-280-8192

**OR DOWNLOAD THE ORDER FORM NOW AT:**  
[kelyniam.com](http://kelyniam.com)



As a neurosurgeon specializing in skull base surgery and brain tumors, I am encouraged with the advancements Kelyniam has made in patient customized cranial implants. I am extremely happy with the precision fit and the fast service I receive with every case. No matter how complex the cranial defect, Kelyniam's implant design team is very responsive to my needs.

**-DR. MARIO AMMIRATI, MD, MBA**



I have used a number of flaps to repair craniectomies for my stroke and trauma patients in the past from various manufacturers. None come close to the manufacturing quality and “perfect fit” of the Kelyniam Global PEEK flaps. Their new tab design just makes it all that much easier to get the job done securely, and as quickly and easily as possible. I could not be more happy with their product unless it was to insert itself.

**MARK V. SMITH, MD, NEUROSURGEON**

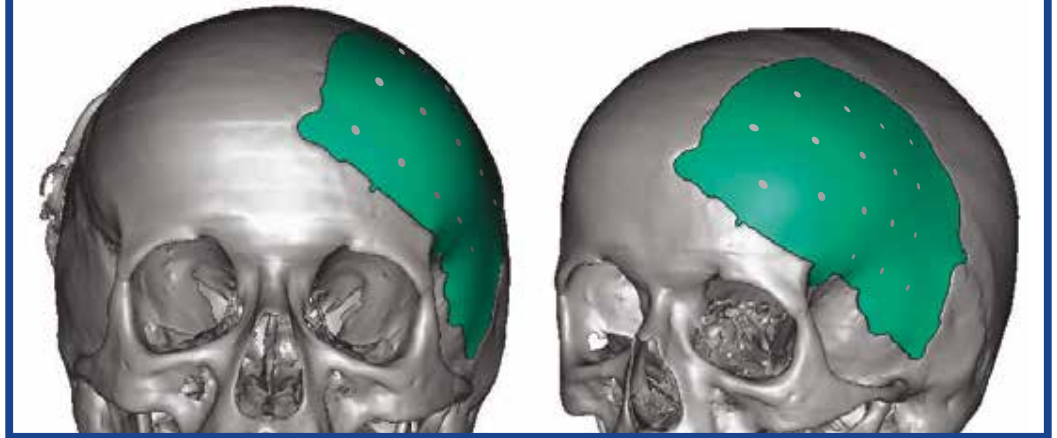


# The Best Design

## STANDARD NON IFS IMPLANT

- *Better anatomic fit versus conventional reconstructive methods*
- *Noticeable preferred fit versus other competing implant options*
- *Reduced operating time compared to traditional reconstructive methods that require extensive contouring (titanium mesh/bone cement)*
- *Excellent aesthetic results for surgeon and patient*

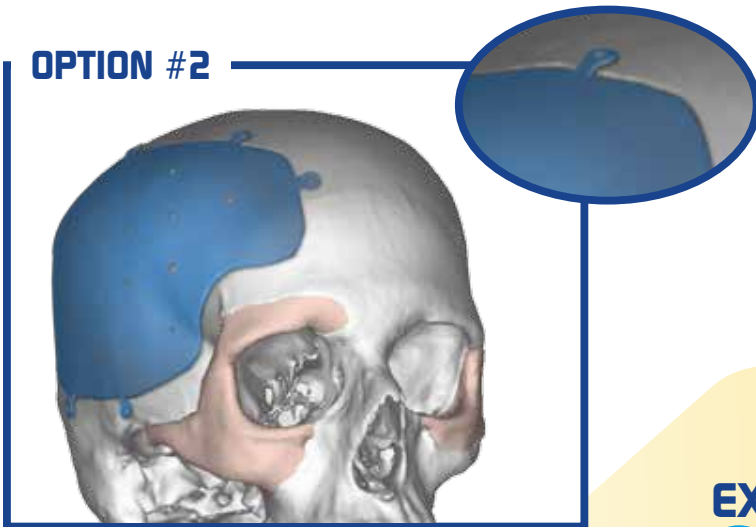
## OPTION #1



## INTEGRATED FIXATION SYSTEM (IFS)

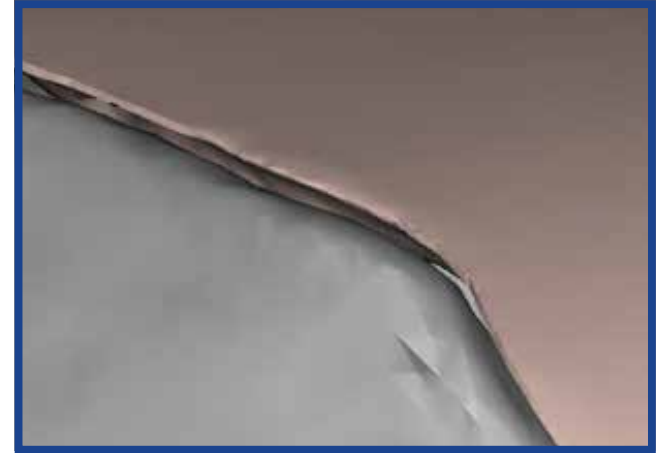
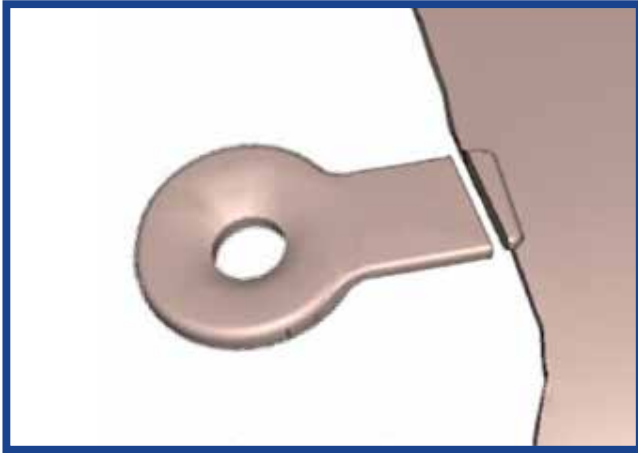
- *Low profile tabs*
- *You decide where the tabs go*
- *Will accommodate any available 1.8mm screw*
- *Easy to break off if not needed*
- *Easy to replace with TI plate and screws*
- *Very user friendly*

## OPTION #2



**EXPEDITING**  
Superior Outcomes

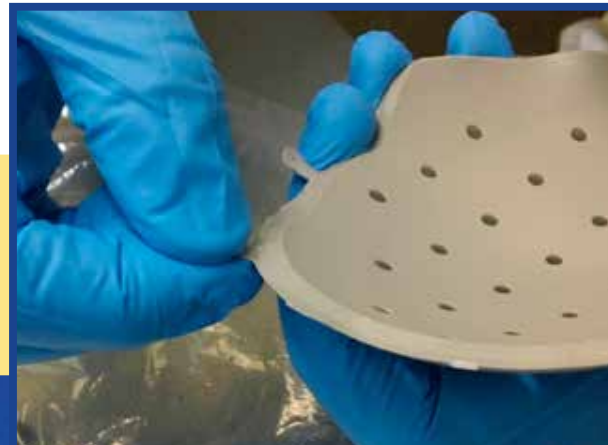
Easily removed and replace (if necessary) with your choice of fixation system.

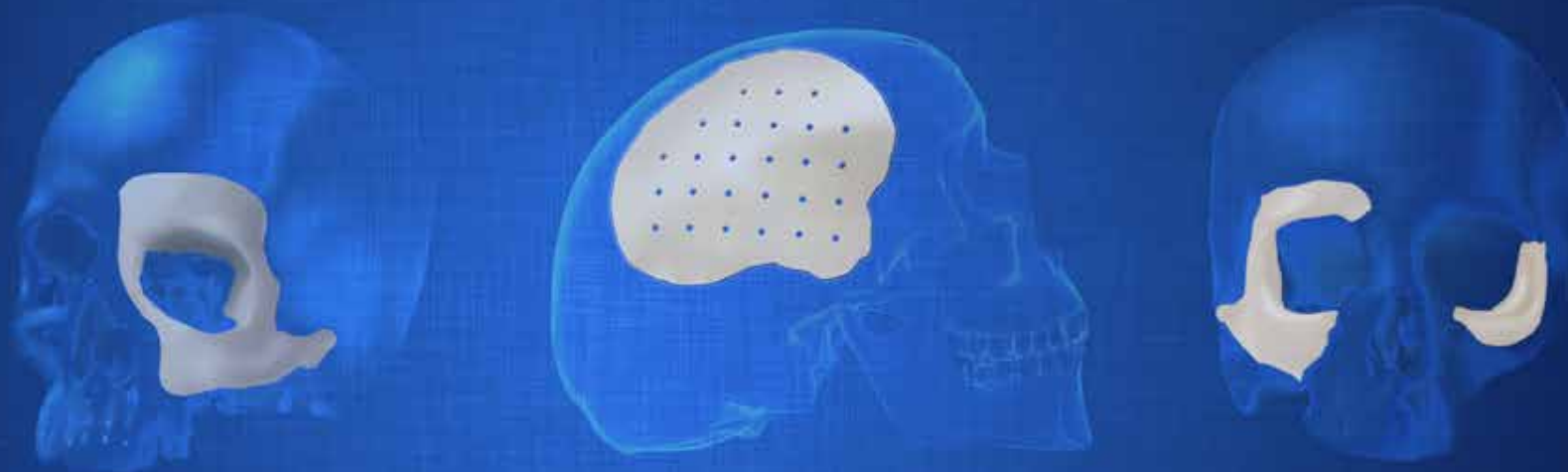


**PROVEN**  
Ease of Use

**“WHERE WOULD YOU LIKE US TO PLACE YOUR TABS”**

*Patent Pending  
Integrated  
Fixation System  
(IFS)*





Kelyniam Global, Inc. is a Medical Device Manufacturing Company that specializes in the production of customized implants utilizing computer aided design and advanced bio-compatible medical grade polymers.

# KELYNIAM

Kelyniam Global, Inc., 97 River Road, STE A, Canton, CT 06019  
©2014 Kelyniam Global, Inc. All Rights Reserved.  
Fax: 1-501-641-2000 International: 1-800-280-8192 Local: 1-855-703-6095

**1-800-280-8192** [www.kelyniam.com](http://www.kelyniam.com)



ISO 13485: 2003 & CMDCAS  
Certificate FM 603068



US Design Patent  
Application Serial  
No. 29/472,313



K121755  
K103592